

Percentages of Numbers

Name: _____ Class: _____

Calculate the following percentages

$75\% \text{ of } 150 =$

$30\% \text{ of } 180 =$

$25\% \text{ of } 170 =$

$20\% \text{ of } 160 =$

$15\% \text{ of } 150 =$

$50\% \text{ of } 145 =$

$45\% \text{ of } 200 =$

$10\% \text{ of } 198 =$

$60\% \text{ of } 450 =$

$40\% \text{ of } 325 =$

$60\% \text{ of } 400 =$

$73\% \text{ of } 250 =$

$25\% \text{ of } 190 =$

$65\% \text{ of } 150 =$

$50\% \text{ of } 153 =$

$50\% \text{ of } 110 =$

$95\% \text{ of } 160 =$

$75\% \text{ of } 500 =$

$65\% \text{ of } 320 =$

$35\% \text{ of } 170 =$

$88\% \text{ of } 150 =$

$40\% \text{ of } 100 =$

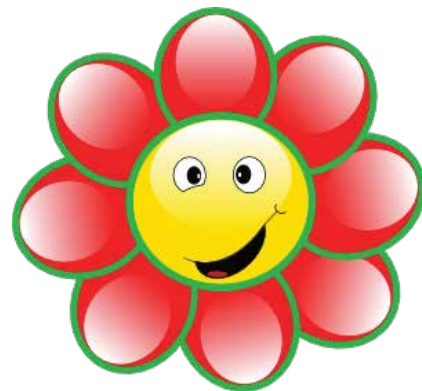
$33\% \text{ of } 150 =$

$75\% \text{ of } 270 =$

$90\% \text{ of } 250 =$

$47\% \text{ of } 250 =$

$23\% \text{ of } 200 =$



Answers

Calculate the following percentages

$75\% \text{ of } 150 = 112.5$

$30\% \text{ of } 180 = 54$

$25\% \text{ of } 170 = 42.5$

$20\% \text{ of } 160 = 32$

$15\% \text{ of } 150 = 22.5$

$50\% \text{ of } 145 = 72.5$

$45\% \text{ of } 200 = 90$

$10\% \text{ of } 198 = 19.8$

$60\% \text{ of } 450 = 270$

$40\% \text{ of } 325 = 130$

$60\% \text{ of } 400 = 240$

$73\% \text{ of } 250 = 182.5$

$25\% \text{ of } 190 = 47.5$

$65\% \text{ of } 150 = 97.5$

$50\% \text{ of } 153 = 76.50$

$50\% \text{ of } 110 = 55$

$95\% \text{ of } 160 = 152$

$75\% \text{ of } 500 = 375$

$65\% \text{ of } 320 = 208$

$35\% \text{ of } 170 = 59.5$

$88\% \text{ of } 150 = 132$

$40\% \text{ of } 100 = 40$

$33\% \text{ of } 150 = 49.5$

$75\% \text{ of } 270 = 202.5$

$90\% \text{ of } 250 = 225$

$47\% \text{ of } 250 = 117.5$

$23\% \text{ of } 200 = 46$

